

GF10-1/GF10-2 (G026/G036)

PARTS CATALOG

First Edition October 1998

RICOH COMPANY,LTD

PARTS CATALOG

INTRODUCTION

This chapter instructs you the numbers and names of parts on this machine.

INDEX to PARTS CATALOG

**GF10-1/GF10-2
Paper Feed Unit**

**(G026/G036)
(G512)**

GF10-1/GF10-2 (G026/G036)

PARTS CATALOG

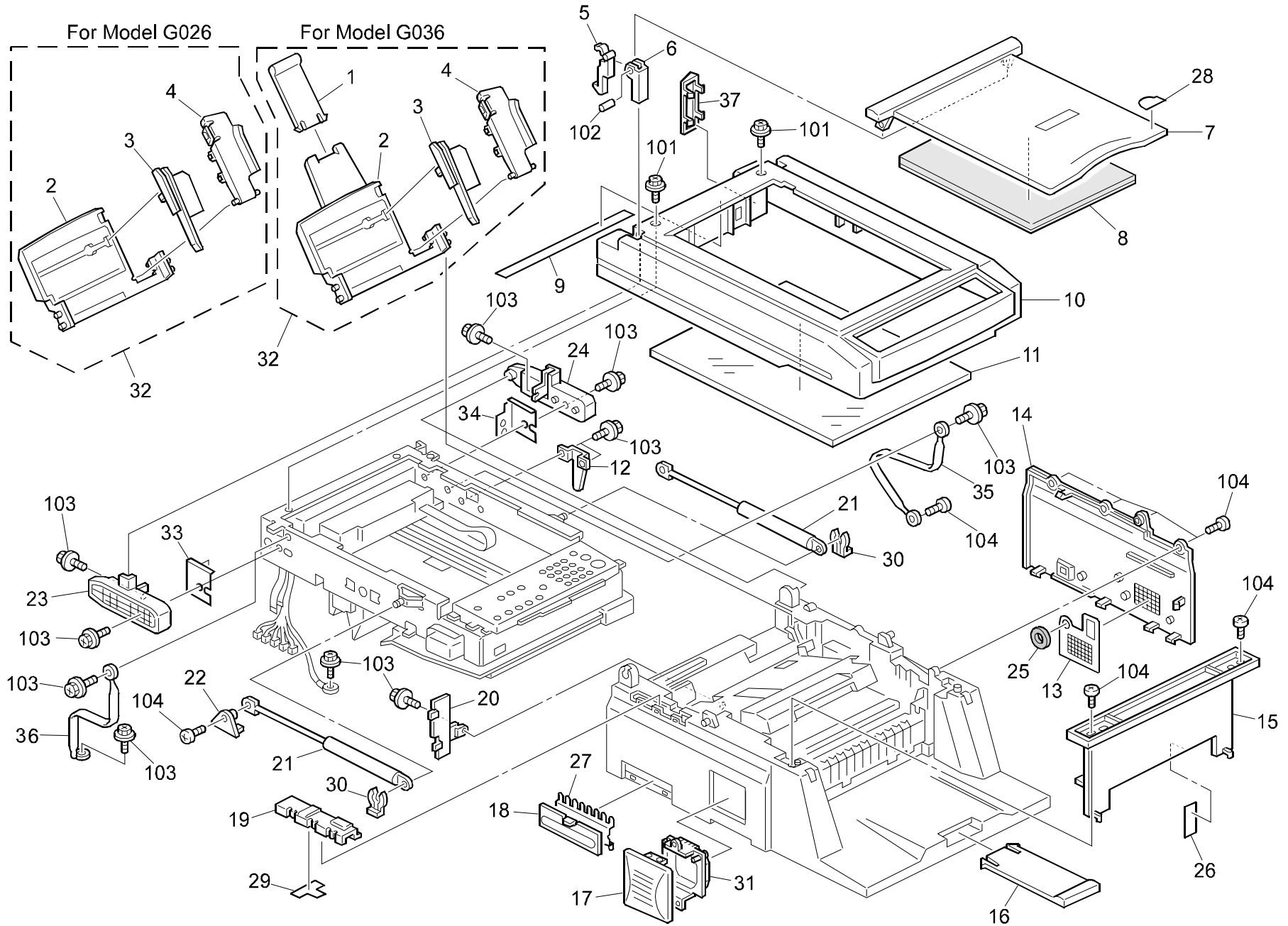
INTRODUCTION

This chapter instructs you the numbers and names of parts on this machine.

INDEX to PARTS CATALOG

1.EXTERIOR (G026/G036)	2
2.DF UNIT 1 (G036)	4
3.DF UNIT 2 (G036)	6
4.SCANNER AND OPERATION PANEL (G026/G036)	8
5.LASER UNIT (G026/G036)	10
6.FUSING UNIT (G026/G036).....	12
7.TRANSPORT SECTION 1 (G026/G036)	14
8.TRANSPORT SECTION 2 (G026/G036)	16
9.ELECTRICAL SECTION (G026/G036)	18
10.DECAL AND SPECIAL TOOLS (G026/G036).....	20
PARTS INDEX	23

1.EXTERIOR (G026/G036)

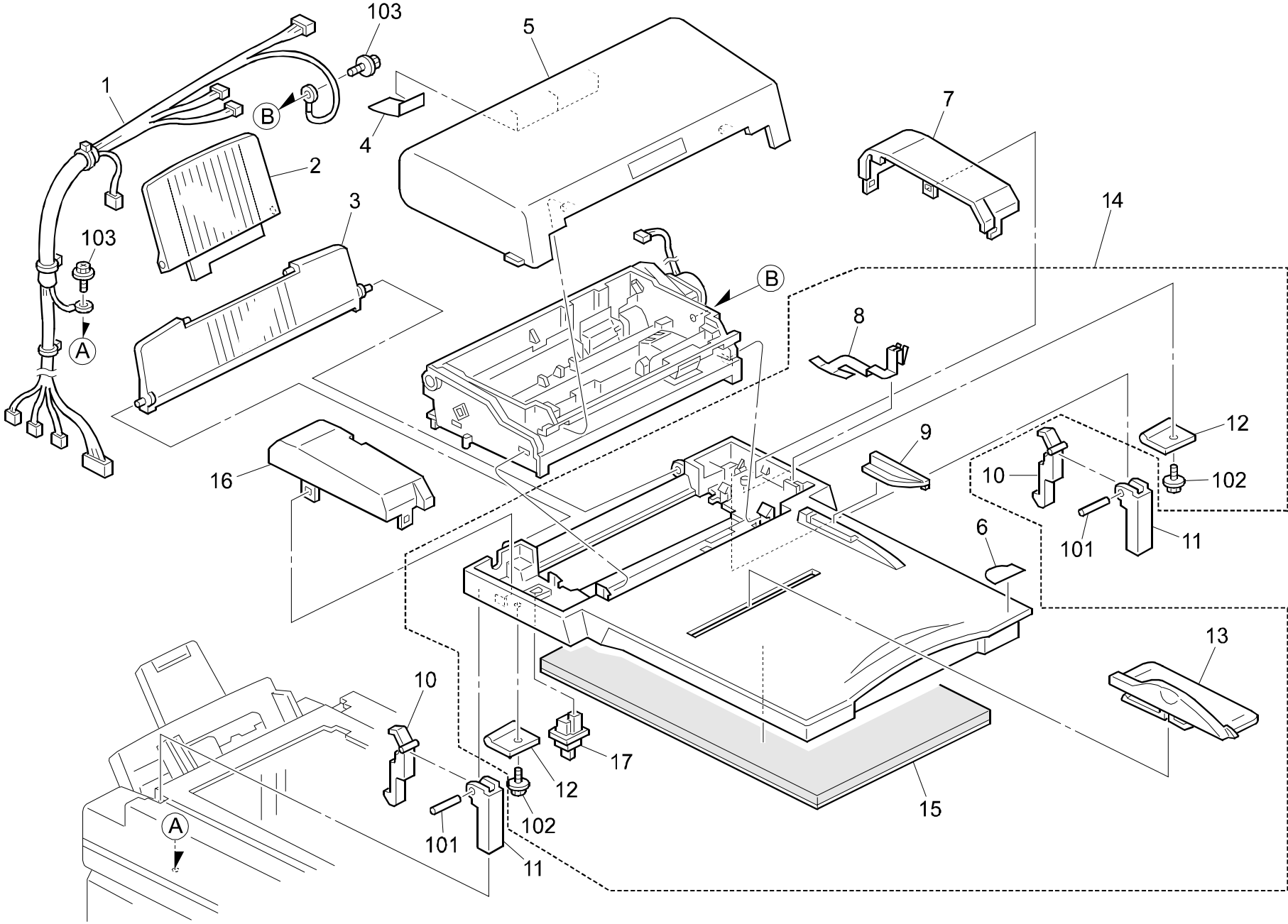


1.EXTERIOR (G026/G036)

Index No.	Part No.	Description	Q'ty Per Assembly
1	G025 2463	Document Tray - Extension	1
2	G026 3006	Paper Tray - GF-GOOD (G026)	1
2	G025 3006	Paper Tray (G036)	1
3	G025 3007	Paper Guide	1
4	G025 3029	Auxiliary Paper Tray	1
5	G026 1506	Stopper (G026)	2
6	G027 1505	Hinge - Platen Cover	2
7	G026 1504	Platen Cover (G026)	1
8	G026 1503	Platen Cover Pad (G026)	1
9	G027 1502	Shading Plate	1
10	G027 1501	Upper Cover - Scanner Unit	1
11	G027 2056	Exposure Glass	1
12	G027 2062	Arm - Interlock Switch Actuator	1
13	G025 1321	Switch Guard	1
14	G027 1308	Left Cover - GF	1
15	G027 1130	Front Cover - Scanner	1
16	G025 2463	Document Tray - Extension	1
17	G027 1233	Fan Motor Cover - GF	1
18	G025 1176	Simm Cover	1
19	G027 1133	Sensor Harness Cover	1
20	G025 1214	NCU Cover	1
21	G027 1120	Gas Spring	2
22	G027 1131	Gus Spring Cover	1
23	G027 2055	Lefu Holder - Scanner Unit	1
24	G027 2054	Right Holder - Scanner Unit	1
25	G025 1322	Seal - Cover	1
26	G027 1129	Polyester Film	1
27	G025 1178	Simm Shield Plate	1
28	AA00 1389	Large Decal - Energy Star	1
29	G027 1190	Polyester Film	1
30	5215 2621	Snap Ring - M6	2
31	G027 1234	Fan Motor Bracket - GF	1
32	G026 3203	Paper Tray Assy (G026)	1
32	G025 3203	Paper Tray Assy (G036)	1
33	G027 2063	Protector - Hinge - Left	1

Index No.	Part No.	Description	Q'ty Per Assembly
34	G027 2064	Protector - Hinge - Right	1
35	G027 5077	Ground Wire - Right - GF	1
36	G027 5076	Ground Wire - Left - GF	1
37	G027 3041	Paper Feed Cover	1
101	0451 3006Z	Tapping Screw - M3x6	
102	0624 0120G	Spring Pin - M4x12	
103	0451 3006B	Tapping Screw - M3x6	
104	0452 3008B	Tapping Screw - M3x8	

2.DF UNIT 1 (G036)



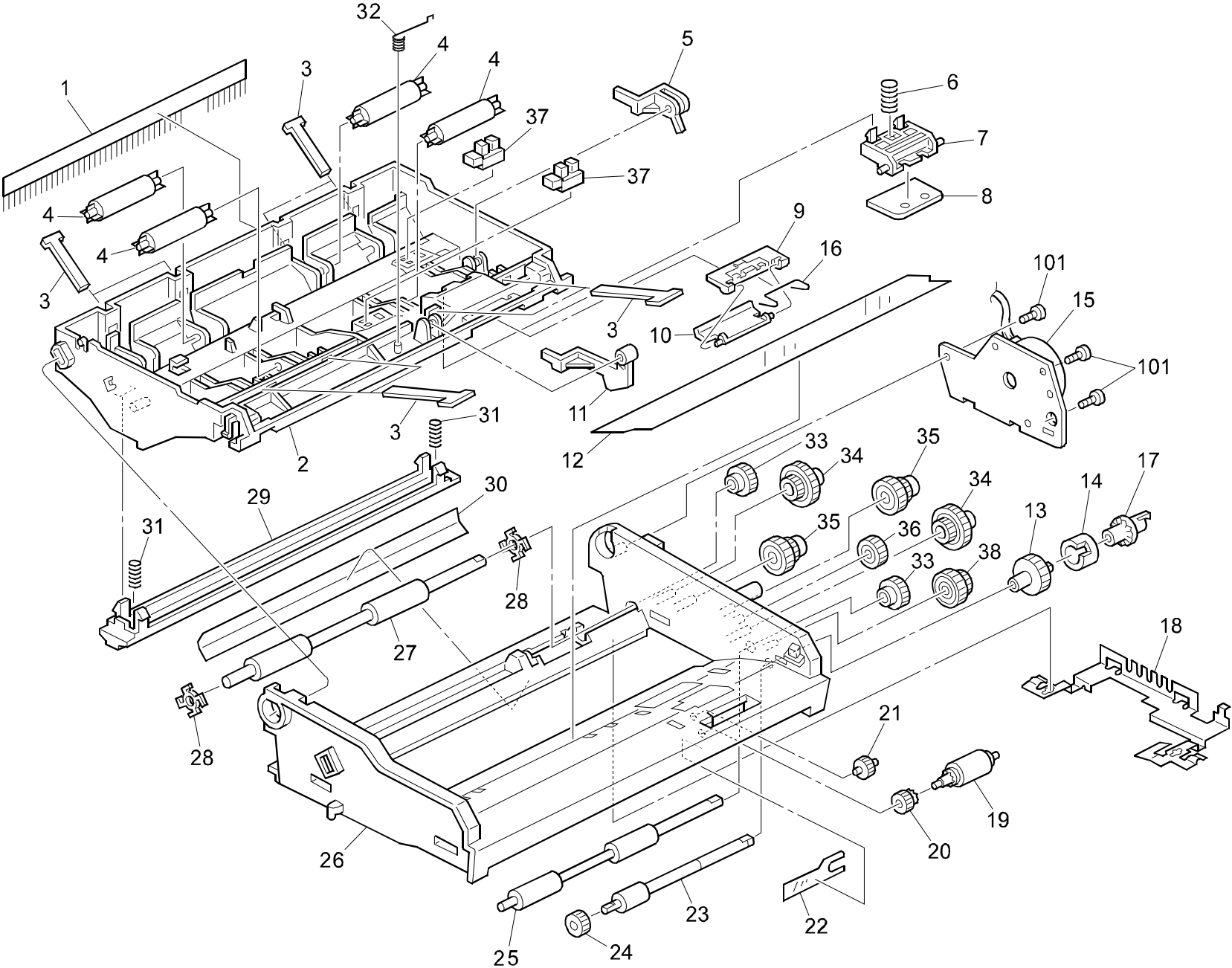
2.DF UNIT 1 (G036)

Index No.	Part No.	Description	Q'ty Per Assembly
1	G027 5060	ADF Harness	1
2	G027 2491	Document Tray - B	1
3	G027 2490	Document Tray - A	1
4	G027 2420	Polyester Film	3
5	G027 2480	ADF Cover	1
6	AA00 1389	Large Decal - Energy Star	1
7	G027 2481	Right ADF Cover	1
8	G025 2437	Ground Plate - Document Feed Roller	1
9	G027 2483	Document Guide Plate - Upper	1
10	G027 2404	Stopper (G036)	2
11	G027 1505	Hinge - Platen Cover	2
12	G027 2405	Stopper Plate	2
13	G025 2462	Document Guide	1
14	G027 2540	Platen Cover Ass'y (G036)	1
15	G027 2400	Platen Cover Pad (G036)	1
16	G027 2482	Left ADF Cover	1
17	AW50 0012	Push Switch	1



Index No.	Part No.	Description	Q'ty Per Assembly
101	0624 0120G	Spring Pin - M4x12	
102	0450 3008Z	Tapping Screw - M3x8	
103	0451 3006B	Tapping Screw - M3x6	

3.DF UNIT 2 (G036)

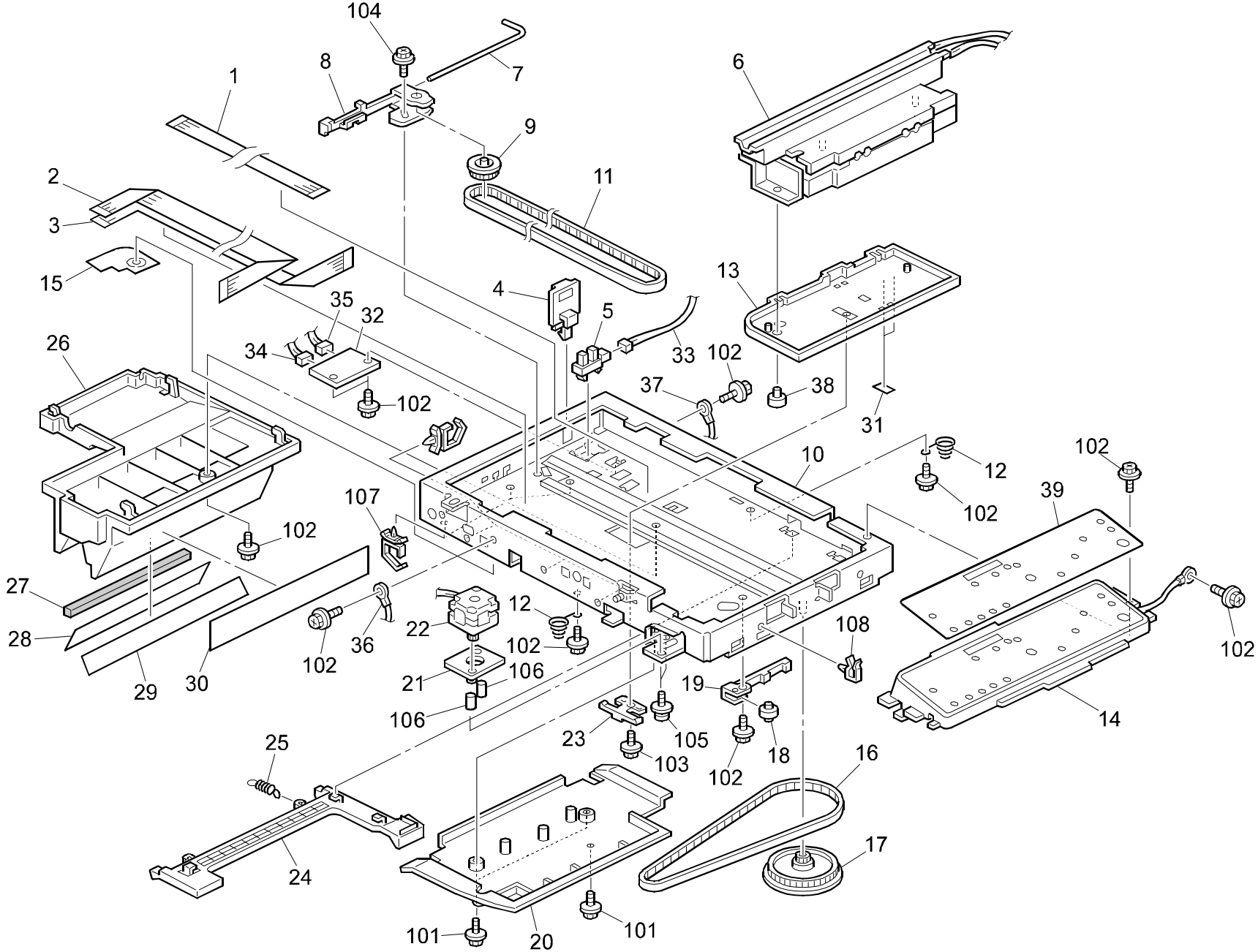


3.DF UNIT 2 (G036)

Index No.	Part No.	Description	Q'ty Per Assembly
1	G025 2485	Antistatic Brush	1
2	G025 2401	ADF Upper Frame	1
3	G025 2457	Plate Spring - Roller	2
4	G025 2456	Guide Roller	4
5	G025 2452	Actuator - Registration Sensor	1
6	G025 2447	Coil Spring - Separation Tab	1
7	G025 2445	Separation Tab Holder	1
8	G025 2446	Separation Tab	1
9	G025 2480	Bracket - Pick-up Pressure Plate	1
10	G025 2481	Pick-up Pressure Plate	1
11	G025 2451	Actuator - Document Sensor	1
12	G025 2473	Polyester Film	1
13	G025 2448	Gear 39z	1
14	G025 2449	Movable Ratchet - Feed Roller	1
15	G025 2416	ADF Motor - DC24V 0.2A	1
16	G025 2482	Spring - Pick-up Pressure	1
17	G025 2450	Ratchet - Feed Roller	1
18	G025 2436	Ground Plate	1
19	G025 2440	Document Pick-up Roller	1
20	G025 2439	Gear 20z	1
21	G025 2442	Gear 19z	1
22	G025 2438	Pressure Plate - Pick-up Roller	1
23	G025 2444	Document Feed Roller	1
24	G025 2443	Gear 23z	1
25	G025 2453	Document Feed - In Roller	1
26	G025 2400	ADF Base Frame	1
27	G025 2454	Document Feed - Out Roller	1
28	G025 2458	Exit Fingers	2
29	G025 2471	Upper Plate - Document Guide	1
30	G027 2407	Shading Plate - Rear	1
31	G025 2472	Coil Spring - Guide Plate	2
32	G025 2486	Spring - Document Sensor Actuator	1
33	G025 2455	Gear 23z	2
34	G025 2413	Coupled Gear - 22/43z	2
35	G025 2412	Coupled Gear - 22/37z	2

Index No.	Part No.	Description	Q'ty Per Assembly
36	G025 2415	Gear - 27Z	1
37	AW02 0075	Photointerrupter	2
38	G025 2414	Coupled Gear - 25/33z	1
101	0452 3008B	Tapping Screw - M3x8	

4. SCANNER AND OPERATION PANEL (G026/G036)

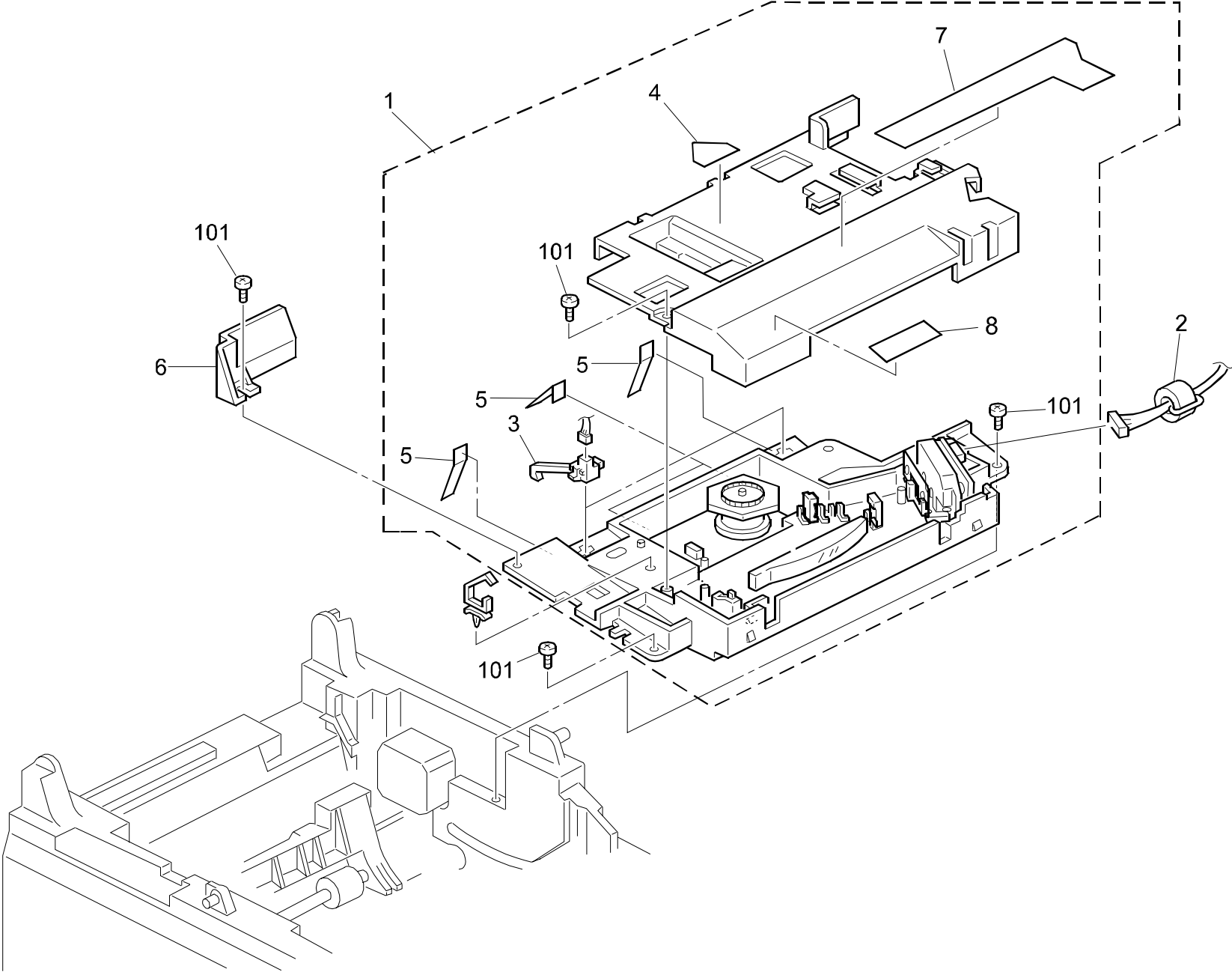


4. SCANNER AND OPERATION PANEL (G026/G036)

Index No.	Part No.	Description	Q'ty Per Assembly
1	G027 5050	FFC Harness - CCD-SJB	1
2	G027 5054	FFC Harness - Operation Panel 1	1
3	G027 5055	FFC Harness - Operation Panel 2	1
4	G027 2057	CCD Unit Stopper	1
5	AW02 0075	Photointerrupter	1
6	G025 1900	CCD Unit	1
7	G027 1907	Spring - Pulley Bracket	1
8	G027 1904	Pulley Bracket	1
9	G027 1905	Pulley	1
10	G027 2040	Base - Scanner Unit	1
11	G027 1902	Timing Belt - 40S2M898	1
12	G027 1132	Coil Spring - Scanner	2
13	G027 1901	Base - CCD Unit	1
14	G036 1461	Operation Panel	1
15	G027 2061	Polyester Film	1
16	G027 2003	Timing Belt - 40S2M448	1
17	G027 2001	Pulley	1
18	G027 2005	Tightener Roller	1
19	G027 2004	Tightener Bracket	1
20	G027 1500	Lower Cover - Scanner Unit	1
21	G027 2002	Rubber Cushion - Scanner Motor	1
22	G027 2010	Scanner Motor - DC24V 0.35A	1
23	G027 1906	Side Plate	1
24	G027 1126	Lock Lever	1
25	G027 1127	Coil Spring - Lock Lever	1
26	G027 2060	Lower Bracket - Scanner Unit	1
27	G025 1166	Seal - Lower Bracket	1
28	G027 2065	Seal F1 Duct	1
29	G027 2066	Seal F2 Duct	1
30	G025 1220	Decal - Supply	1
31	G027 1903	Polyester Film	4
32	G025 6051	PCB - SJB	1
33	G027 5052	Harness - Home Sensor	1
34	G027 5056	Harness - Data - SJB-SCB	1
35	G027 5051	Relay Harness - SJB-SCB	1

Index No.	Part No.	Description	Q'ty Per Assembly
36	G027 5076	Ground Wire - Left	1
37	G027 5077	Ground Wire - Right	1
38	A184 1691	2nd Scanner Shoe	1
39	G026 1462	Operation Panel Sheet - English (G026-17)	1
39	G036 1462	Operation Panel Sheet - English (G036-17)	1
101	0451 3006Z	Tapping Screw - M3x6	
102	0451 3006B	Tapping Screw - M3x6	
103	0452 3008B	Tapping Screw - M3x8	
104	0452 3010B	Tapping Bind Screw - M3x10	
105	0954 3008B	Philips Screw - M3x8	
106	0707 3040B	Bushing - 3x4	
107	1105 0310	Harness Clamp - LWS-1S	
108	1105 0283	Clamp	

5.LASER UNIT (G026/G036)

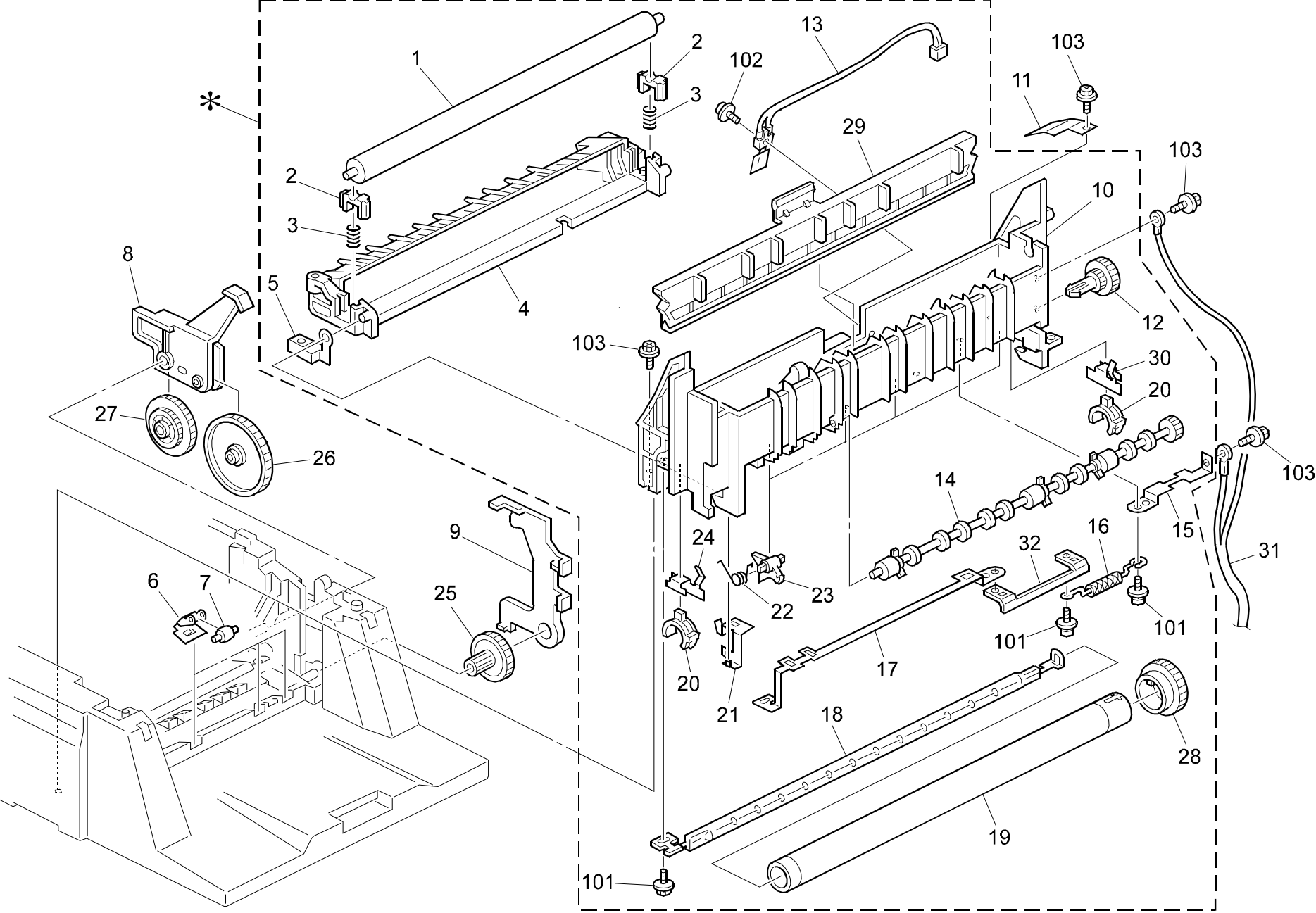


5.LASER UNIT (G026/G036)

Index No.	Part No.	Description	Q'ty Per Assembly
1	G025 1849	Laser Unit Assy	1
2	G025 5032	Harness - Laser Unit	1
3	G025 5001	Paper Size Sensor	2
4	G020 1917	Decal - LD	1
5	G025 3038	Poliester Film	4
6	G027 1189	FFC Guide Plate	1
7	G027 1316	Decal - Motor - GF	1
8	G020 1918	Decal - Laser Diode (230V)	1
8	G020 1920	Decal - Laser Diode (115V)	1

Index No.	Part No.	Description	Q'ty Per Assembly
101	0452 3010B	Tapping Bind Screw - M3x10	

6.FUSING UNIT (G026/G036)

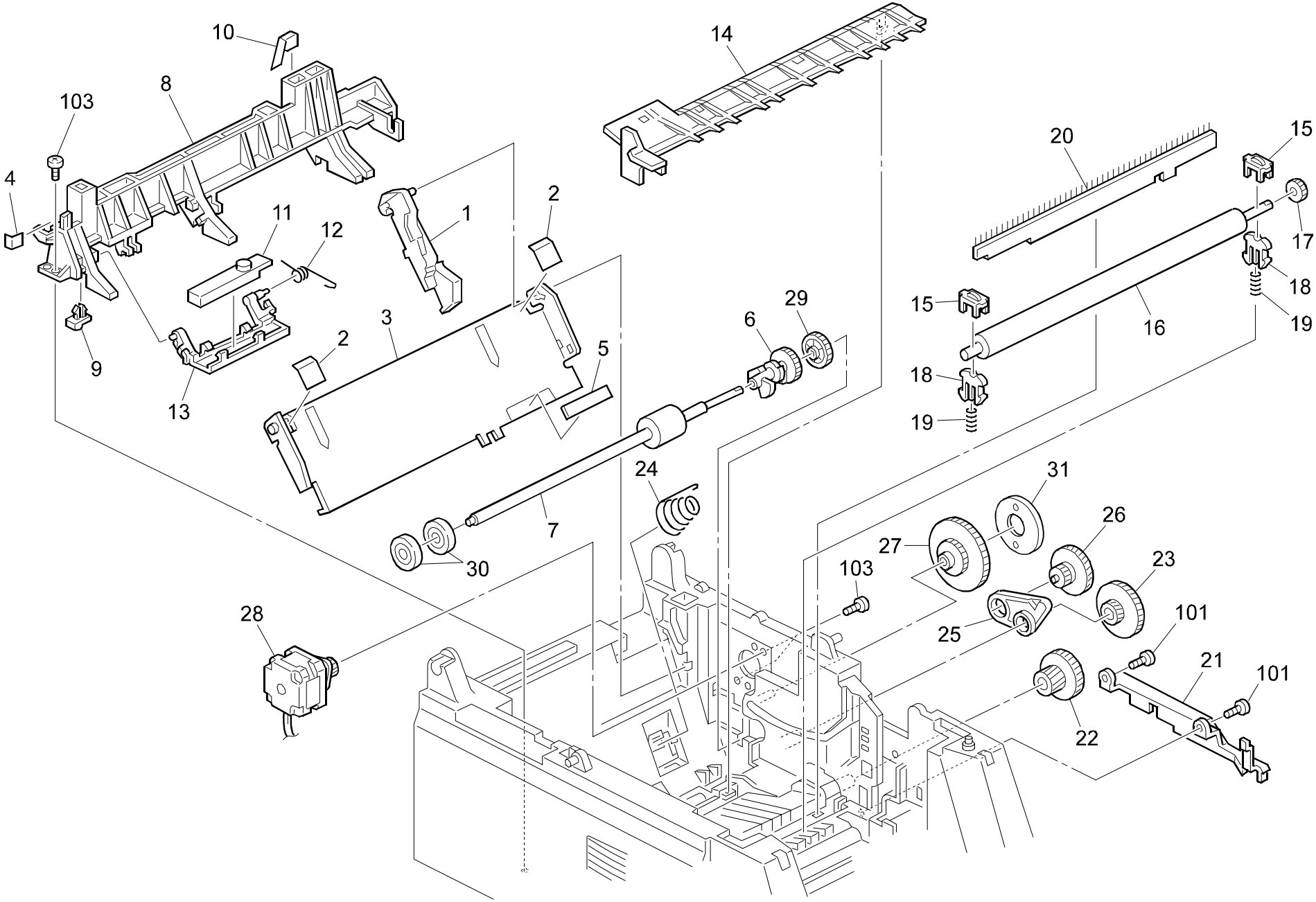


6.FUSING UNIT (G026/G036)

Index No.	Part No.	Description	Q'ty Per Assembly
*	G027 4550	Fusing Unit - GF (NA)	1
*	G027 4551	Fusing Unit - GF (EU)	1
1	G025 4501	Fusing Pressure Roller	1
2	G025 4506	Bushing - Pressure Roller	2
3	G025 4504	Coil Spring - Pressure Roller	2
4	G025 4508	Lower Bracket - Fusing Unit	1
5	G025 4542	Guide Plate - Pressure Roller	1
6	G025 4533	Pressure Plate - Paper Exit Roller	3
7	G025 4535	Roller	3
8	G025 1310	Release Lever - Fusing	1
9	G025 1173	Actuator - Interlock Switch	1
10	G025 4507	Upper Bracket - Fusing Unit	1
11	G025 1197	Thermistor Harness Cover	1
12	G025 4511	Coupled Gear 15/25z	1
13	G025 5002	Thermistor	1
14	G025 4536	Paper Exit Roller	1
15	G025 4519	Right Terminal - Thermofuse	1
16	G025 4521	Thermofuse 121°C	1
17	G025 4513	Left Terminal - Thermofuse	1
18	G025 4587	Fusing Lamp - 120V	1
18	G025 4588	Fusing Lump - 230V	1
19	G025 4500	Hot Roller	1
20	G025 4502	Bushing - Hot Roller	2
21	G025 4541	Guide Plate - Hot Roller	1
22	G025 4546	Spring - Pick-off Pawl	4
23	G025 4512	Pick-off Pawl - Fusing	4
24	G025 4523	Hot Roller Stopper - Left	1
25	G025 1306	Coupled Gear - 21/48z	1
26	G025 1305	Gear 59z	1
27	G025 1304	Coupled Gear - 40/41z	1
28	G025 4537	Gear 35z	1
29	G025 4524	Cleaning Felt Assy	1
30	G025 4522	Hot Roller Stopper - Right	1
31	G025 5034	Harness - Fusing Lamp	1
32	G025 4514	Center Terminal - Thermofuse	1

Index No.	Part No.	Description	Q'ty Per Assembly
101	0957 3006B	Screw - M3X6	
102	0957 3010B	Screw With Flat Washer, M3x10	
103	0452 3008B	Tapping Screw - M3x8	

7. TRANSPORT SECTION 1 (G026/G036)



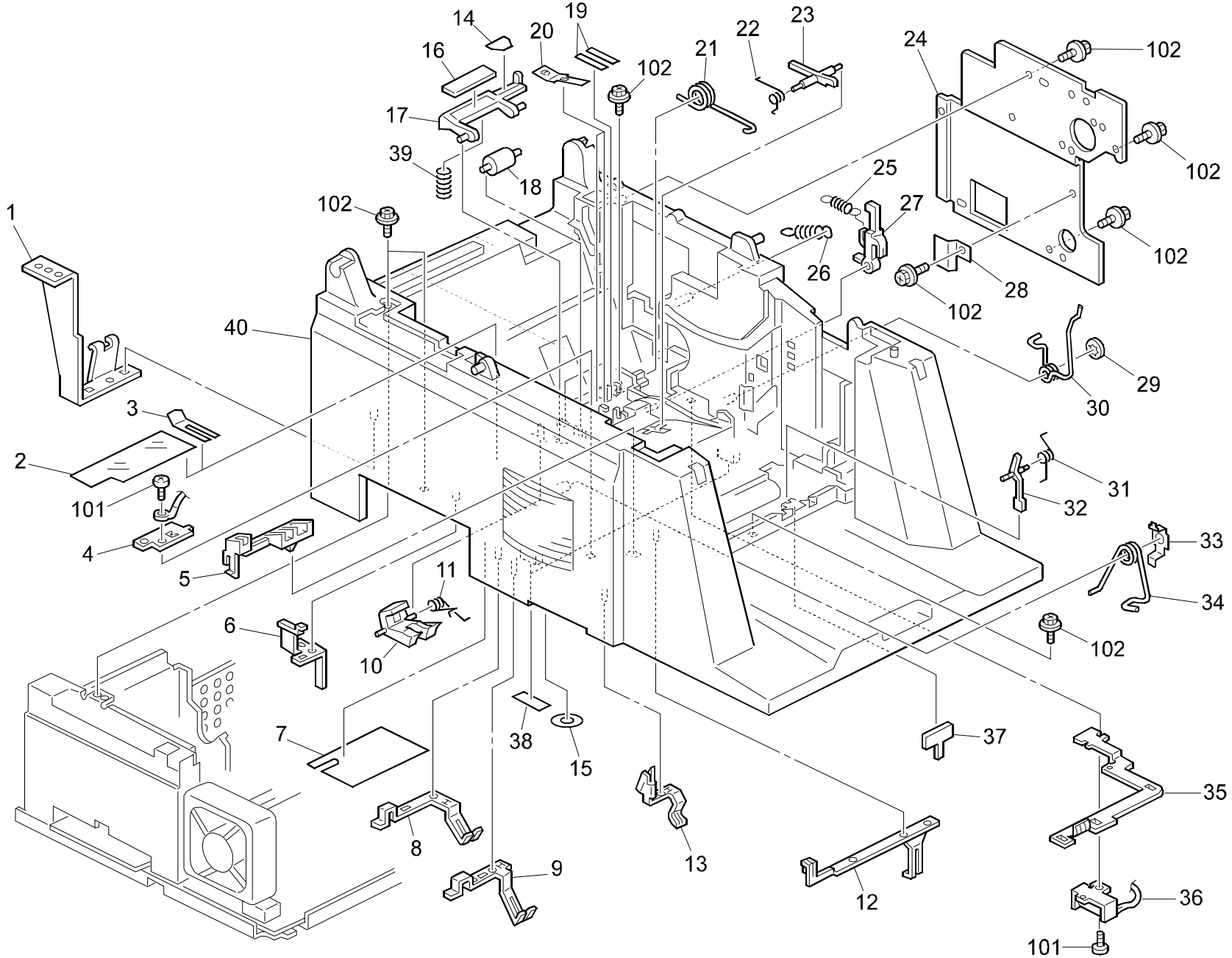
7.TRANSPORT SECTION 1 (G026/G036)

Index No.	Part No.	Description	Q'ty Per Assembly
1	G025 3018	Left Bracket - Bottom Plate	1
2	G025 3035	Polyester Film	2
3	G025 3005	Bottom Plate - Paper Pick-up	1
4	G025 3042	Harness Stopper - Toner End	1
5	G025 3009	Bottom Plate Pad	1
6	G025 3010	Paper Pick-up Cam	1
7	G025 3002	Paper Feed Roller	1
8	G025 3001	Paper Pick-up Bracket	1
9	G025 3034	Bushing - Paper Pick-up Bracket	1
10	G025 3025	Polyester Film	1
11	G025 5000	Toner End Sensor	1
12	G025 3102	Spring - Toner End Sensor	1
13	G025 3101	Bracket - Toner End Sensor	1
14	G025 1117	Guide Plate - Paper Feed	1
15	G025 3407	Bushing - Transfer Roller	2
16	G025 3410	Transfer Roller	1
17	G025 3405	Gear 28z	1
18	G025 3403	Transfer Roller Bracket	2
19	G025 3404	Spring - Transfer Roller	2
20	G025 1145	Antistatic Brush	1
21	G025 1186	AC Harness Cover	1
22	G025 1303	Coupled Gear - 23/54z	1
23	G025 1302	Coupled Gear - 23/41z	1
24	G025 3008	Coil Spring - Paper Pick-up	1
25	G025 1311	Release Lever - Paper Feed	1
26	G025 1307	Coupled Gear - 21/46z	1
27	G025 1301	Coupled Gear - 32/105z	1
28	G025 1320	Main Motor - DC24V 0.7A	1
29	G025 3011	Gear 41z	1
30	G025 3003	Roller	2
31	G025 1319	Wheel - Coupled Gear - 32/105z	1





Index No.	Part No.	Description	Q'ty Per Assembly
101	0957 3006B	Screw - M3X6	
102	0451 3006Z	Tapping Screw - M3x6	
103	0452 3008B	Tapping Screw - M3x8	

8.TRANSPORT SECTION 2 (G026/G036)

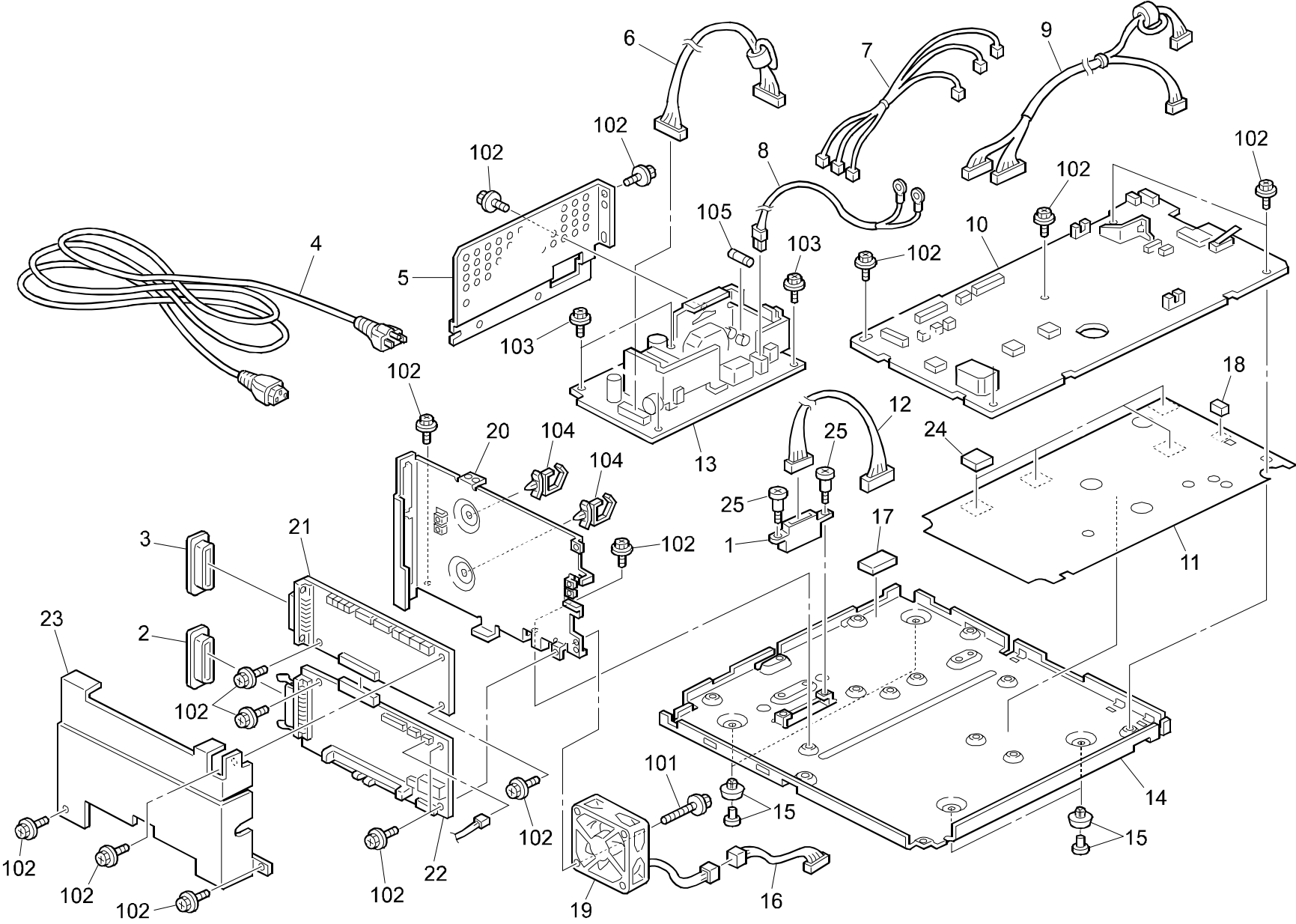


8.TRANSPORT SECTION 2 (G026/G036)

Index No.	Part No.	Description	Q'ty Per Assembly
1	G025 1149	Terminal - Ground	1
2	G025 3031	Polyester Film	1
3	G025 3033	Polyester Film	1
4	G025 1148	Terminal - Transfer - New	1
5	G025 1159	Terminal Cover	1
6	G025 1151	Ground Plate - Paper Feed	1
7	G025 1184	Terminal Shield	1
8	G025 1154	Terminal - Toner Supply	1
9	G025 1153	Terminal - Development	1
10	G025 3017	Stopper - Paper Pick-up	1
11	G025 3030	Spring - Paper Pick-up Stopper	1
12	G025 1155	Terminal - Charge	1
13	G025 1152	Ground Plate - Fusing Unit	1
14	G025 3040	Polyester Film	1
15	G025 1203	Polyester Film	1
16	G025 3023	Paper Separation Pad	1
17	G025 3022	Bracket - Paper Separation Pad	1
18	G025 3012	Roller	1
19	G025 3032	Polyester Film	2
20	G025 3013	Plate Spring - Roller	2
21	G025 3014	Torsion Spring - Paper Pick-up Cam	1
22	G025 3026	Coil Spring - Sensor Actuator	1
23	G025 3004	Actuator - Paper Pick-up Sensor	1
24	G025 1314	Moter Bracket	1
25	G025 3016	Coil Spring - Actuator	1
26	G025 3028	Coil Spring - Paper Pick-up Roller	1
27	G025 3015	Actuator - Paper Pick-up Cam	1
28	G025 1197	Thermistor Harness Cover	1
29	G025 1160	Ring M6	1
30	G025 1157	Spring - Cartridge Lock	1
31	G025 4543	Spring - Exit Sensor Actuator	1
32	G025 4515	Actuator - Paper Exit Sensor	1
33	G025 1158	Spring Stopper	1
34	G025 1150	Grounding Spring - Cartridge	1
35	G025 3037	Ground Plate - DC Solenoid	1

Index No.	Part No.	Description	Q'ty Per Assembly
36	G025 5009	DC Solenoid	1
37	G025 4516	Cushion - Sensor Actuator	1
38	G025 1202	Polyester Film	2
39	G025 3019	Spring - Paper Separation Pad	1
40	G026 1110	Main Frame	1
	 		
101	0452 3008B	Tapping Screw - M3x8	
102	0451 3006B	Tapping Screw - M3x6	

9.ELECTRICAL SECTION (G026/G036)




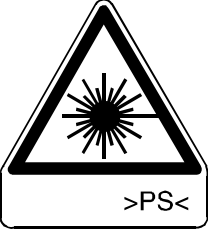

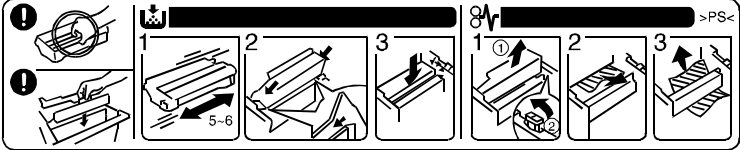
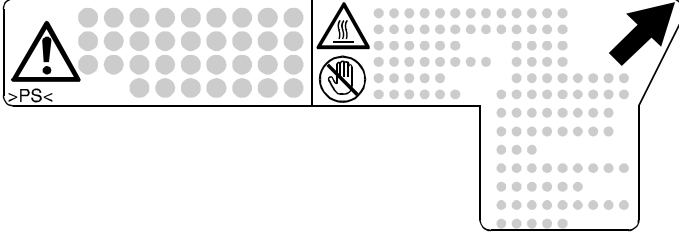
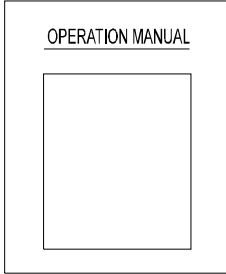
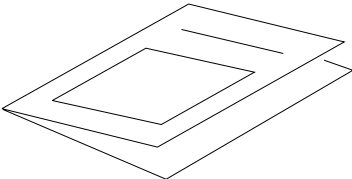
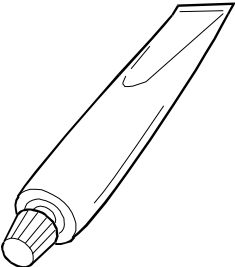
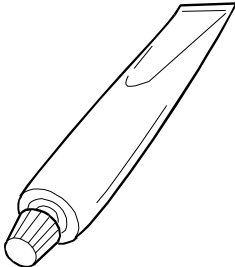
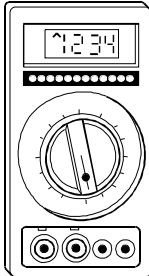
9.ELECTRICAL SECTION (G026/G036)

Index No.	Part No.	Description	Q'ty Per Assembly
1	G025 1183	Connector - Paper Feed Unit	1
2	G025 1206	Connector Cover - Control Board	1
3	G025 1205	Connector Cover - SCB	1
4	G025 5072	Power Cord - US	1
4	1150 0024	Power Supply Cord - 250V (Asia)	1
5	G025 1315	Moter Bracket 2	1
6	G025 5033	Harness - Power - Main	1
7	G025 5004	Harness - Sensors	1
8	G025 5034	Harness - Fusing Lamp	1
9	G025 5032	Harness - Laser Unit	1
10	G025 6021	PCB - MCB	1
11	G025 1181	Shield - PCB - MCB	1
12	G025 5038	Harness - Option	1
13	G025 5010	Power Supply Unit - 100/120V	1
13	G025 5011	Power Supply Unit - 230V	1
14	G025 1140	Bottom Plate	1
15	G027 1180	Rubber Foot - GF	4
16	G027 5063	Harness - Fan Motor Extention	1
17	G025 1209	Seal - Connector	1
18	G025 1208	PCB Spacer	3
19	G025 5049	Fan Motor	1
20	G025 1172	PCB Bracket	1
21	G025 6011	PCB - SCB (G026)	1
21	G027 6011	PCB - SCB (G036)	1
22	G026 6000	PCB - Control Board	1
23	G025 1174	Shield Plate	1
24	G025 1185	PCB Spacer	4
25	G025 1179	Shoulder Screw	2



Index No.	Part No.	Description	Q'ty Per Assembly
101	0452 3008B	Tapping Screw - M3x8	
102	0451 3006B	Tapping Screw - M3x6	
103	0954 3008B	Philips Screw - M3x8	
104	1105 0310	Harness Clamp - LWS-1S	
105	1107 0879	Fuse - 5A 250V	
105	1107 0874	Fuse - 10A 125V	

10.DECAL AND SPECIAL TOOLS (G026/G036)

<p>1</p> 	<p>2</p> 	<p>3</p> 	
<p>4</p> 		<p>5</p> 	<p>6</p> 
<p>7</p> 	<p>8</p> 	<p>9</p> 	<p>10</p> 

10.DECAL AND SPECIAL TOOLS (G026/G036)

Index No.	Part No.	Description	Q'ty Per Assembly
1	AA00 1389	Large Decal - Energy Star	1
2	G020 1917	Decal - LD	1
3	G020 1920	Decal - Laser Diode (115V)	1
3	G020 1918	Decal - Laser Diode (230V)	1
4	G025 1220	Decal - Supply	1
5	G027 1316	Decal - Motor	1
6	G026 8647	Operation Manual (NA)	1
7	G036 8610	Instalation Guide	1
8	A190 9002	Grease - CP501 (5PCS/SET)	1
9	G004 9668	Grease : KS660 : Shin - Etsu	1
10	5420 9507	Digital Multimeter	1



Index No.	Part No.	Description	Q'ty Per Assembly

PARTS INDEX

Part No.	Description	Page and Index No.
G026 1110	Main Frame	17- 40
G026 1462	Operation Panel Sheet - English	9- 39
G026 1503	Platen Cover Pad (G026)	3- 8
G026 1504	Platen Cover (G026)	3- 7
G026 1506	Stopper (G026)	3- 5
G026 3006	Paper Tray - GF-GOOD (G026)	3- 2
G026 3203	Paper Tray Assy (G026)	3- 32
G026 6000	PCB - Control Board	19- 22
G026 8647	Operation Manual (NA)	21- 6

Part No.	Description	Page and Index No
AA00 1389	Large Decal - Energy Star	21- 1
AA00 1389	Large Decal - Energy Star	5- 6
AA00 1389	Large Decal - Energy Star	3- 28
AW02 0075	Photointerrupter	9- 5
AW02 0075	Photointerrupter	7- 37
AW50 0012	Push Switch	5- 17
G004 9668	Grease : KS660 : Shin - Etsu	21- 9
G020 1917	Decal - LD	11- 4
G020 1917	Decal - LD	21- 2
G020 1918	Decal - Laser Diode (230V)	21- 3
G020 1918	Decal - Laser Diode (230V)	11- 8
G020 1920	Decal - Laser Diode (115V)	21- 3
G020 1920	Decal - Laser Diode (115V)	11- 8
G025 1117	Guide Plate - Paper Feed	15- 14
G025 1140	Bottom Plate	19- 14
G025 1145	Antistatic Brush	15- 20
G025 1148	Terminal - Transfer - New	17- 4
G025 1149	Terminal - Ground	17- 1
G025 1150	Grounding Spring - Cartridge	17- 34
G025 1151	Ground Plate - Paper Feed	17- 6
G025 1152	Ground Plate - Fusing Unit	17- 13
G025 1153	Terminal - Development	17- 9
G025 1154	Terminal - Toner Supply	17- 8
G025 1155	Terminal - Charge	17- 12
G025 1157	Spring - Cartridge Lock	17- 30
G025 1158	Spring Stopper	17- 33
G025 1159	Terminal Cover	17- 5
G025 1160	Ring M6	17- 29
G025 1166	Seal - Lower Bracket	9- 27
G025 1172	PCB Bracket	19- 20
G025 1173	Actuator - Interlock Switch	13- 9
G025 1174	Shield Plate	19- 23
G025 1176	Simm Cover	3- 18
G025 1178	Simm Shield Plate	3- 27
G025 1179	Shoulder Screw	19- 25

Part No.	Description	Page and Index No.
G025 1181	Shield - PCB - MCB	19- 11
G025 1183	Connector - Paper Feed Unit	19- 1
G025 1184	Terminal Shield	17- 7
G025 1185	PCB Spacer	19- 24
G025 1186	AC Harness Cover	15- 21
G025 1197	Thermistor Harness Cover	17- 28
G025 1197	Thermistor Harness Cover	13- 11
G025 1202	Polyester Film	17- 38
G025 1203	Polyester Film	17- 15
G025 1205	Connector Cover - SCB	19- 3
G025 1206	Connector Cover - Control Board	19- 2
G025 1208	PCB Spacer	19- 18
G025 1209	Seal - Connector	19- 17
G025 1214	NCU Cover	3- 20
G025 1220	Decal - Supply	9- 30
G025 1220	Decal - Supply	21- 4
G025 1301	Coupled Gear - 32/105z	15- 27
G025 1302	Coupled Gear - 23/41z	15- 23
G025 1303	Coupled Gear - 23/54z	15- 22
G025 1304	Coupled Gear - 40/41z	13- 27
G025 1305	Gear 59z	13- 26
G025 1306	Coupled Gear - 21/48z	13- 25
G025 1307	Coupled Gear - 21/46z	15- 26
G025 1310	Release Lever - Fusing	13- 8
G025 1311	Release Lever - Paper Feed	15- 25
G025 1314	Moter Bracket	17- 24
G025 1315	Moter Bracket 2	19- 5
G025 1319	Wheel - Coupled Gear - 32/105z	15- 31
G025 1320	Main Motor - DC24V 0.7A	15- 28
G025 1321	Switch Guard	3- 13
G025 1322	Seal - Cover	3- 25
G025 1849	Laser Unit Assy	11- 1
G025 1900	CCD Unit	9- 6
G025 2400	ADF Base Frame	7- 26
G025 2401	ADF Upper Frame	7- 2

Part No.	Description	Page and Index No
G025 2412	Coupled Gear - 22/37z	7- 35
G025 2413	Coupled Gear - 22/43z	7- 34
G025 2414	Coupled Gear - 25/33z	7- 38
G025 2415	Gear - 27Z	7- 36
G025 2416	ADF Motor - DC24V 0.2A	7- 15
G025 2436	Ground Plate	7- 18
G025 2437	Ground Plate - Document Feed Roller	5- 8
G025 2438	Pressure Plate - Pick-up Roller	7- 22
G025 2439	Gear 20z	7- 20
G025 2440	Document Pick-up Roller	7- 19
G025 2442	Gear 19z	7- 21
G025 2443	Gear 23z	7- 24
G025 2444	Document Feed Roller	7- 23
G025 2445	Separation Tab Holder	7- 7
G025 2446	Separation Tab	7- 8
G025 2447	Coil Spring - Separation Tab	7- 6
G025 2448	Gear 39z	7- 13
G025 2449	Movable Ratchet - Feed Roller	7- 14
G025 2450	Ratchet - Feed Roller	7- 17
G025 2451	Actuator - Document Sensor	7- 11
G025 2452	Actuator - Registration Sensor	7- 5
G025 2453	Document Feed - In Roller	7- 25
G025 2454	Document Feed - Out Roller	7- 27
G025 2455	Gear 23z	7- 33
G025 2456	Guide Roller	7- 4
G025 2457	Plate Spring - Roller	7- 3
G025 2458	Exit Fingers	7- 28
G025 2462	Document Guide	5- 13
G025 2463	Document Tray - Extension	3- 1
G025 2463	Document Tray - Extension	3- 16
G025 2471	Upper Plate - Document Guide	7- 29
G025 2472	Coil Spring - Guide Plate	7- 31
G025 2473	Polyester Film	7- 12
G025 2480	Bracket - Pick-up Pressure Plate	7- 9
G025 2481	Pick-up Pressure Plate	7- 10

Part No.	Description	Page and Index No.
G025 2482	Spring - Pick-up Pressure	7- 16
G025 2485	Antistatic Brush	7- 1
G025 2486	Spring - Document Sensor Actuator	7- 32
G025 3001	Paper Pick-up Bracket	15- 8
G025 3002	Paper Feed Roller	15- 7
G025 3003	Roller	15- 30
G025 3004	Actuator - Paper Pick-up Sensor	17- 23
G025 3005	Bottom Plate - Paper Pick-up	15- 3
G025 3006	Paper Tray (G036)	3- 2
G025 3007	Paper Guide	3- 3
G025 3008	Coil Spring - Paper Pick-up	15- 24
G025 3009	Bottom Plate Pad	15- 5
G025 3010	Paper Pick-up Cam	15- 6
G025 3011	Gear 41z	15- 29
G025 3012	Roller	17- 18
G025 3013	Plate Spring - Roller	17- 20
G025 3014	Torsion Spring - Paper Pick-up Cam	17- 21
G025 3015	Actuator - Paper Pick-up Cam	17- 27
G025 3016	Coil Spring - Actuator	17- 25
G025 3017	Stopper - Paper Pick-up	17- 10
G025 3018	Left Bracket - Bottom Plate	15- 1
G025 3019	Spring - Paper Separation Pad	17- 39
G025 3022	Bracket - Paper Separation Pad	17- 17
G025 3023	Paper Separation Pad	17- 16
G025 3025	Polyester Film	15- 10
G025 3026	Coil Spring - Sensor Actuator	17- 22
G025 3028	Coil Spring - Paper Pick-up Roller	17- 26
G025 3029	Auxiliary Paper Tray	3- 4
G025 3030	Spring - Paper Pick-up Stopper	17- 11
G025 3031	Polyester Film	17- 2
G025 3032	Polyester Film	17- 19
G025 3033	Polyester Film	17- 3
G025 3034	Bushing - Paper Pick-up Bracket	15- 9
G025 3035	Polyester Film	15- 2
G025 3037	Ground Plate - DC Solenoid	17- 35

Part No.	Description	Page and Index No
G025 3038	Poliester Film	11- 5
G025 3040	Polyester Film	17- 14
G025 3042	Harness Stopper - Toner End	15- 4
G025 3101	Bracket - Toner End Sensor	15- 13
G025 3102	Spring - Toner End Sensor	15- 12
G025 3203	Paper Tray Assy (G036)	3- 32
G025 3403	Transfer Roller Bracket	15- 18
G025 3404	Spring - Transfer Roller	15- 19
G025 3405	Gear 28z	15- 17
G025 3407	Bushing - Transfer Roller	15- 15
G025 3410	Transfer Roller	15- 16
G025 4500	Hot Roller	13- 19
G025 4501	Fusing Pressure Roller	13- 1
G025 4502	Bushing - Hot Roller	13- 20
G025 4504	Coil Spring - Pressure Roller	13- 3
G025 4506	Bushing - Pressure Roller	13- 2
G025 4507	Upper Bracket - Fusing Unit	13- 10
G025 4508	Lower Bracket - Fusing Unit	13- 4
G025 4511	Coupled Gear 15/25z	13- 12
G025 4512	Pick-off Pawl - Fusing	13- 23
G025 4513	Left Terminal - Thermofuse	13- 17
G025 4514	Center Terminal - Thermofuse	13- 32
G025 4515	Actuator - Paper Exit Sensor	17- 32
G025 4516	Cushion - Sensor Actuator	17- 37
G025 4519	Right Terminal - Thermofuse	13- 15
G025 4521	Thermofuse 121°C	13- 16
G025 4522	Hot Roller Stopper - Right	13- 30
G025 4523	Hot Roller Stopper - Left	13- 24
G025 4524	Cleaning Felt Assy	13- 29
G025 4533	Pressure Plate - Paper Exit Roller	13- 6
G025 4535	Roller	13- 7
G025 4536	Paper Exit Roller	13- 14
G025 4537	Gear 35z	13- 28
G025 4541	Guide Plate - Hot Roller	13- 21
G025 4542	Guide Plate - Pressure Roller	13- 5

Part No.	Description	Page and Index No.
G025 4543	Spring - Exit Sensor Actuator	17- 31
G025 4546	Spring - Pick-off Pawl	13- 22
G025 4587	Fusing Lamp - 120V	13- 18
G025 4588	Fusing Lump - 230V	13- 18
G025 5000	Toner End Sensor	15- 11
G025 5001	Paper Size Sensor	11- 3
G025 5002	Thermistor	13- 13
G025 5004	Harness - Sensors	19- 7
G025 5009	DC Solenoid	17- 36
G025 5010	Power Supply Unit - 100/120V	19- 13
G025 5011	Power Supply Unit - 230V	19- 13
G025 5032	Harness - Laser Unit	19- 9
G025 5032	Harness - Laser Unit	11- 2
G025 5033	Harness - Power - Main	19- 6
G025 5034	Harness - Fusing Lamp	19- 8
G025 5034	Harness - Fusing Lamp	13- 31
G025 5038	Harness - Option	19- 12
G025 5049	Fan Motor	19- 19
G025 5072	Power Cord - US	19- 4
G025 6011	PCB - SCB (G026)	19- 21
G025 6021	PCB - MCB	19- 10
G025 6051	PCB - SJB	9- 32
G026 1110	Main Frame	17- 40
G026 1462	Operation Panel Sheet - English	9- 39
G026 1503	Platen Cover Pad (G026)	3- 8
G026 1504	Platen Cover (G026)	3- 7
G026 1506	Stopper (G026)	3- 5
G026 3006	Paper Tray - GF-GOOD (G026)	3- 2
G026 3203	Paper Tray Assy (G026)	3- 32
G026 6000	PCB - Control Board	19- 22
G026 8647	Operation Manual (NA)	21- 6
G027 1120	Gas Spring	3- 21
G027 1126	Lock Lever	9- 24
G027 1127	Coil Spring - Lock Lever	9- 25
G027 1129	Polyester Film	3- 26

Part No.	Description	Page and Index No
G027 1130	Front Cover - Scanner	3- 15
G027 1131	Gus Spring Cover	3- 22
G027 1132	Coil Spring - Scanner	9- 12
G027 1133	Sensor Harness Cover	3- 19
G027 1180	Rubber Foot - GF	19- 15
G027 1189	FFC Guide Plate	11- 6
G027 1190	Polyester Film	3- 29
G027 1233	Fan Motor Cover - GF	3- 17
G027 1234	Fan Motor Bracket - GF	3- 31
G027 1308	Left Cover - GF	3- 14
G027 1316	Decal - Motor	21- 5
G027 1316	Decal - Motor - GF	11- 7
G027 1500	Lower Cover - Scanner Unit	9- 20
G027 1501	Upper Cover - Scanner Unit	3- 10
G027 1502	Shading Plate	3- 9
G027 1505	Hinge - Platen Cover	5- 11
G027 1505	Hinge - Platen Cover	3- 6
G027 1901	Base - CCD Unit	9- 13
G027 1902	Timing Belt - 40S2M898	9- 11
G027 1903	Polyester Film	9- 31
G027 1904	Pulley Bracket	9- 8
G027 1905	Pulley	9- 9
G027 1906	Side Plate	9- 23
G027 1907	Spring - Pulley Bracket	9- 7
G027 2001	Pulley	9- 17
G027 2002	Rubber Cushion - Scanner Motor	9- 21
G027 2003	Timing Belt - 40S2M448	9- 16
G027 2004	Tightener Bracket	9- 19
G027 2005	Tightener Roller	9- 18
G027 2010	Scanner Motor - DC24V 0.35A	9- 22
G027 2040	Base - Scanner Unit	9- 10
G027 2054	Right Holder - Scanner Unit	3- 24
G027 2055	Lefu Holder - Scanner Unit	3- 23
G027 2056	Exposure Glass	3- 11
G027 2057	CCD Unit Stopper	9- 4

Part No.	Description	Page and Index No.
G027 2060	Lower Bracket - Scanner Unit	9- 26
G027 2061	Polyester Film	9- 15
G027 2062	Arm - Interlock Switch Actuator	3- 12
G027 2063	Protector - Hinge - Left	3- 33
G027 2064	Protector - Hinge - Right	3- 34
G027 2065	Seal F1 Duct	9- 28
G027 2066	Seal F2 Duct	9- 29
G027 2400	Platen Cover Pad (G036)	5- 15
G027 2404	Stopper (G036)	5- 10
G027 2405	Stopper Plate	5- 12
G027 2407	Shading Plate - Rear	7- 30
G027 2420	Polyester Film	5- 4
G027 2480	ADF Cover	5- 5
G027 2481	Right ADF Cover	5- 7
G027 2482	Left ADF Cover	5- 16
G027 2483	Document Guide Plate - Upper	5- 9
G027 2490	Document Tray - A	5- 3
G027 2491	Document Tray - B	5- 2
G027 2540	Platen Cover Ass'y (G036)	5- 14
G027 3041	Paper Feed Cover	3- 37
G027 4550	Fusing Unit - GF (NA)	13- *
G027 4551	Fusing Unit - GF (EU)	13- *
G027 5050	FFC Harness - CCD-SJB	9- 1
G027 5051	Relay Harness - SJB-SCB	9- 35
G027 5052	Harness - Home Sensor	9- 33
G027 5054	FFC Harness - Operation Panel 1	9- 2
G027 5055	FFC Harness - Operation Panel 2	9- 3
G027 5056	Harness - Data - SJB-SCB	9- 34
G027 5060	ADF Harness	5- 1
G027 5063	Harness - Fan Motor Extention	19- 16
G027 5076	Ground Wire - Left	9- 36
G027 5076	Ground Wire - Left - GF	3- 36
G027 5077	Ground Wire - Right - GF	3- 35
G027 5077	Ground Wire - Right	9- 37
G027 6011	PCB - SCB (G036)	19- 21

Part No.	Description	Page and Index No
G036 1461	Operation Panel	9- 14
G036 1462	Operation Panel Sheet - English	9- 39
G036 8610	Instalation Guide	21- 7

Part No.	Description	Page and Index No.
A184 1691	2nd Scanner Shoe	9- 38
A190 9002	Grease - CP501 (5PCS/SET)	21- 8

Part No.	Description	Page and Index No
5215 2621	Snap Ring - M6	3- 30
5420 9507	Digital Multimeter	21- 10

Part No.	Description	Page and Index No.
0450 3008Z	Tapping Screw - M3x8	5-102
0451 3006B	Tapping Screw - M3x6	19-102
0451 3006B	Tapping Screw - M3x6	17-102
0451 3006B	Tapping Screw - M3x6	3-103
0451 3006B	Tapping Screw - M3x6	5-103
0451 3006B	Tapping Screw - M3x6	9-102
0451 3006Z	Tapping Screw - M3x6	15-102
0451 3006Z	Tapping Screw - M3x6	9-101
0451 3006Z	Tapping Screw - M3x6	3-101
0452 3008B	Tapping Screw - M3x8	17-101
0452 3008B	Tapping Screw - M3x8	15-103
0452 3008B	Tapping Screw - M3x8	13-103
0452 3008B	Tapping Screw - M3x8	19-101
0452 3008B	Tapping Screw - M3x8	9-103
0452 3008B	Tapping Screw - M3x8	7-101
0452 3008B	Tapping Screw - M3x8	3-104
0452 3010B	Tapping Bind Screw - M3x10	9-104
0452 3010B	Tapping Bind Screw - M3x10	11-101
0624 0120G	Spring Pin - M4x12	5-101
0624 0120G	Spring Pin - M4x12	3-102
0707 3040B	Bushing - 3x4	9-106
0954 3008B	Philips Screw - M3x8	19-103
0954 3008B	Philips Screw - M3x8	9-105
0957 3006B	Screw - M3X6	13-101
0957 3006B	Screw - M3X6	15-101
0957 3010B	Screw With Flat Washer, M3x10	13-102
1105 0283	Clamp	9-108
1105 0310	Harness Clamp - LWS-1S	9-107
1105 0310	Harness Clamp - LWS-1S	19-104
1107 0874	Fuse - 10A 125V	19-105
1107 0879	Fuse - 5A 250V	19-105
1150 0024	Power Supply Cord - 250V (Asia)	19- 4

Part No.	Description	Page and Index No